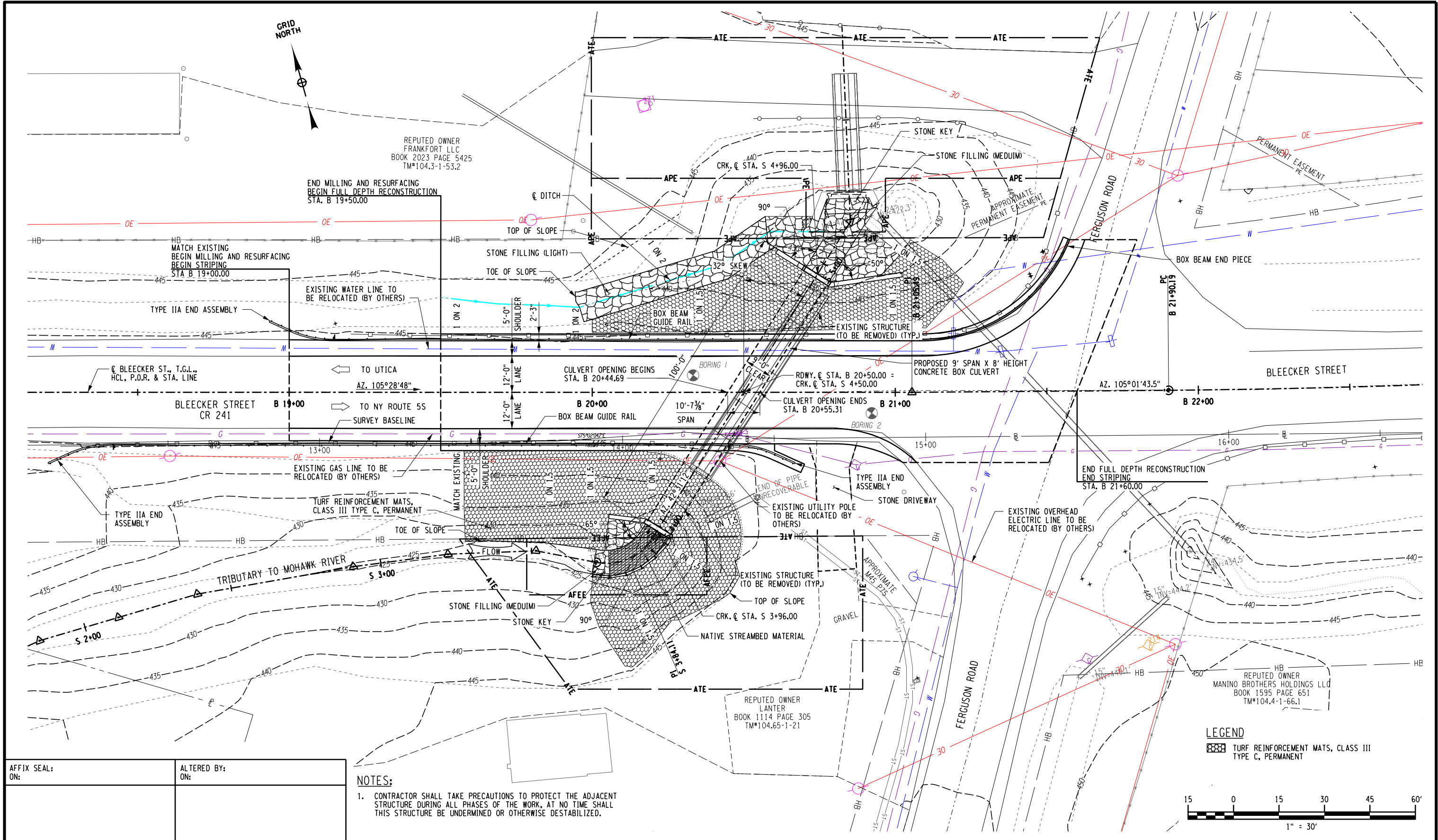


FILE NAME = B:\GLOBAL\Projects\Herkimer County\2251183 - Replace Bleeker St CR 241\Culvert\06_Drawings\Transp\2251183_rpb_gpn.dgn
 DATE = 4/15/2025
 TIME = 2:38:03 PM

PROJECT MANAGER W. FRYE
 CHECK W. FRYE
 DRAFTING V. GREGG
 CHECK W. FRYE
 DESIGN R. MIER
 JOB MANAGER W. FRYE
 DESIGN SUPERVISOR W. FRYE



AFFIX SEAL:
ON:

ALTERED BY:
ON:

NOTES:
 1. CONTRACTOR SHALL TAKE PRECAUTIONS TO PROTECT THE ADJACENT STRUCTURE DURING ALL PHASES OF THE WORK, AT NO TIME SHALL THIS STRUCTURE BE UNDERMINED OR OTHERWISE DESTABILIZED.

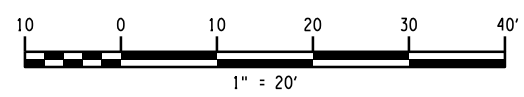
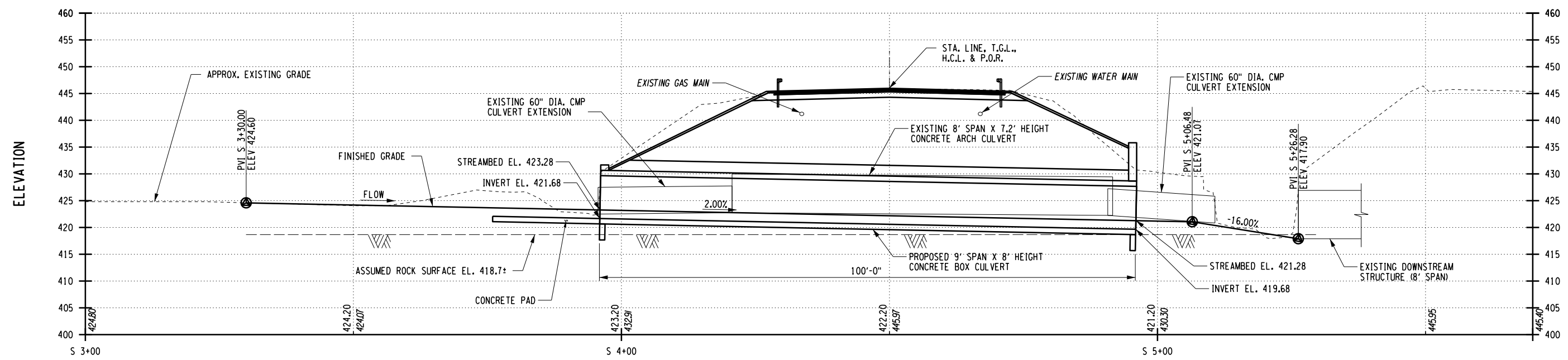
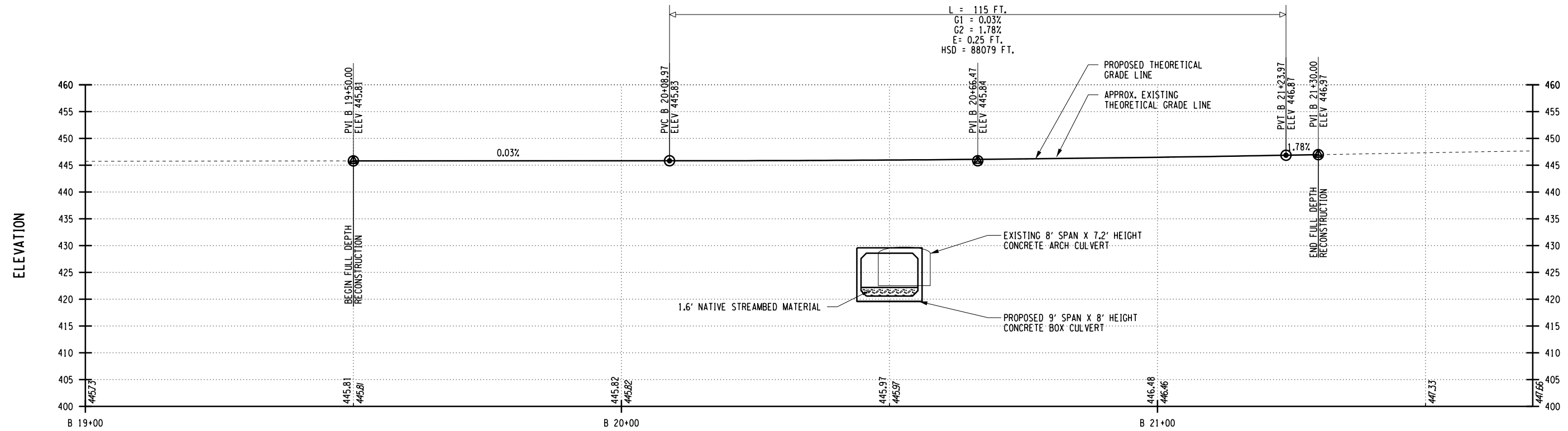
AS-BUILT REVISIONS DESCRIPTION OF ALTERATIONS:	CULVERT REPLACEMENT	PIN 2755.11	BRIDGES	CULVERTS C241-00.91	ALL DIMENSIONS IN FT UNLESS OTHERWISE NOTED	PROJECT NUMBER 2251183
	BLEEKER ST (CR 241)				GENERAL PLAN	DRAWING NO. PL-01
	OVER TRIBUTARY TO MOHAWK RIVER					SHEET NO. 1
	TOWN OF FRANKFORT					
	COUNTY: HERKIMER	REGION: 2				

IT IS A VIOLATION OF LAW FOR ANY PERSON, UNLESS THEY ARE ACTING UNDER THE DIRECTION OF A LICENSED PROFESSIONAL ENGINEER, ARCHITECT, LANDSCAPE ARCHITECT, OR LAND SURVEYOR, TO ALTER AN ITEM IN ANY WAY. IF AN ITEM BEARING THE STAMP OF A LICENSED PROFESSIONAL IS ALTERED, THE ALTERING ENGINEER, ARCHITECT, LANDSCAPE ARCHITECT, OR LAND SURVEYOR SHALL STAMP THE DOCUMENT AND INCLUDE THE NOTATION "ALTERED BY" FOLLOWED BY THEIR SIGNATURE, THE DATE OF SUCH ALTERATION, AND A SPECIFIC DESCRIPTION OF THE ALTERATION.

LEGEND
 TURF REINFORCEMENT MATS, CLASS III TYPE C, PERMANENT

FILE NAME = B:\GLOBAL\Projects\Herkimer County\2251183 - Replace Blecker St CR 241 Culvert\06_Drawings\Transpa\2251183_cph_pro.dgn
 DATE = 4/15/2026
 TIME = 2:38:07 PM

PROJECT MANAGER W. FRYE
 CHECK W. FRYE
 DRAFTING V. GREGG
 DESIGN R. MIER
 JOB MANAGER W. FRYE
 DESIGN SUPERVISOR W. FRYE

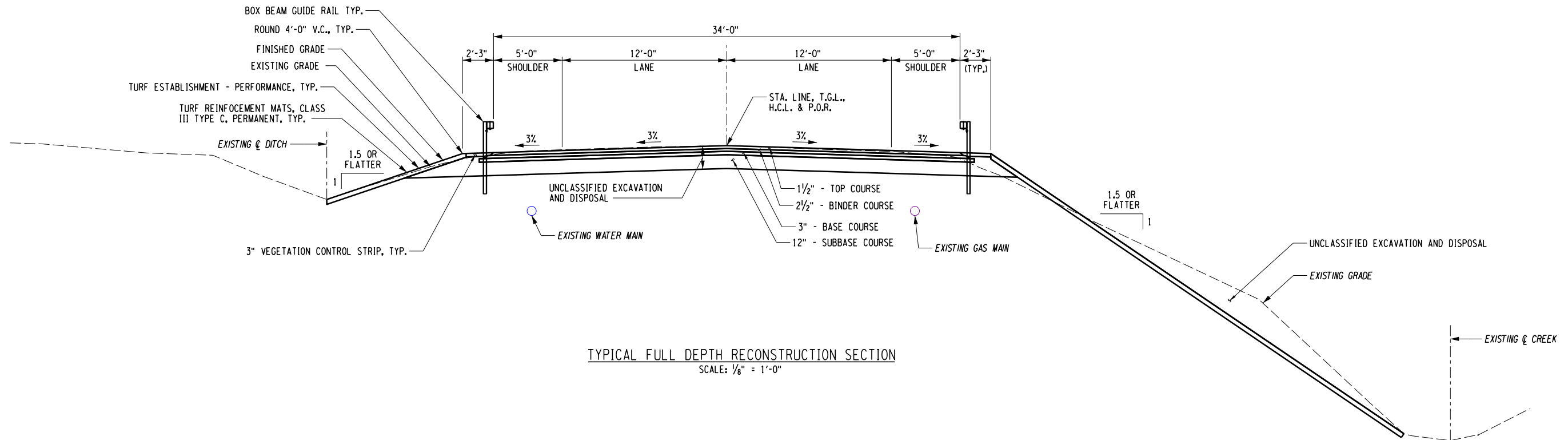


AFFIX SEAL: ON:	ALTERED BY: ON:

AS-BUILT REVISIONS DESCRIPTION OF ALTERATIONS:	CULVERT REPLACEMENT	PIN 2755.11	BRIDGES	CULVERTS C241-00.91	ALL DIMENSIONS IN FT UNLESS OTHERWISE NOTED	PROJECT NUMBER 2251183
	BLEECKER ST (CR 241)					
	OVER TRIBUTARY TO MOHAWK RIVER					
	TOWN OF FRANKFORT					
COUNTY: HERKIMER	REGION: 2	DRAWING NO. PRO-01		SHEET NO. 2		
IT IS A VIOLATION OF LAW FOR ANY PERSON, UNLESS THEY ARE ACTING UNDER THE DIRECTION OF A LICENSED PROFESSIONAL ENGINEER, ARCHITECT, LANDSCAPE ARCHITECT, OR LAND SURVEYOR, TO ALTER AN ITEM IN ANY WAY. IF AN ITEM BEARING THE STAMP OF A LICENSED PROFESSIONAL IS ALTERED, THE ALTERING ENGINEER, ARCHITECT, LANDSCAPE ARCHITECT, OR LAND SURVEYOR SHALL STAMP THE DOCUMENT AND INCLUDE THE NOTATION "ALTERED BY" FOLLOWED BY THEIR SIGNATURE, THE DATE OF SUCH ALTERATION, AND A SPECIFIC DESCRIPTION OF THE ALTERATION.						
					HERKIMER COUNTY HIGHWAY DEPARTMENT	

FILE NAME = B:\GLOBAL\Projects\Herkimer County\2251183 - Replace Bleeker St CR 241 Culvert\06_Drawings\Transpa\2251183_cph_typ.dgn
 DATE = 4/15/2026
 TIME = 2:38:16 PM

DESIGN SUPERVISOR W. FRYE JOB MANAGER W. FRYE DESIGN R. MIER DRAFTING V. GREGG CHECK W. FRYE PROJECT MANAGER W. FRYE



TYPICAL FULL DEPTH RECONSTRUCTION SECTION
 SCALE: 1/8" = 1'-0"

AFFIX SEAL: ON: ALTERED BY: ON:

AS-BUILT REVISIONS
 DESCRIPTION OF ALTERATIONS:

CULVERT REPLACEMENT
 BLEECKER ST (CR 241)
 OVER TRIBUTARY TO MOHAWK RIVER
 TOWN OF FRANKFORT
 COUNTY: HERKIMER REGION: 2

PIN 2755.11
 BRIDGES
 CULVERTS C241-00.91

ALL DIMENSIONS IN FT UNLESS OTHERWISE NOTED
 TYPICAL HIGHWAY SECTION

PROJECT NUMBER 2251183
 DRAWING NO. TYP-01
 SHEET NO. 3

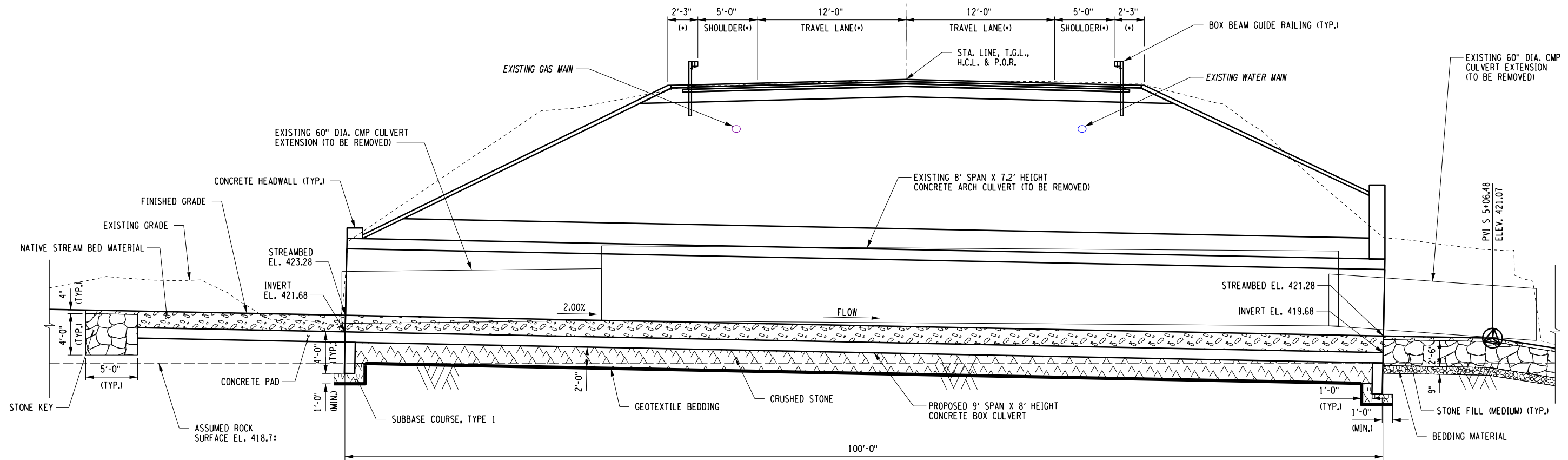
IT IS A VIOLATION OF LAW FOR ANY PERSON, UNLESS THEY ARE ACTING UNDER THE DIRECTION OF A LICENSED PROFESSIONAL ENGINEER, ARCHITECT, LANDSCAPE ARCHITECT, OR LAND SURVEYOR, TO ALTER AN ITEM IN ANY WAY. IF AN ITEM BEARING THE STAMP OF A LICENSED PROFESSIONAL IS ALTERED, THE ALTERING ENGINEER, ARCHITECT, LANDSCAPE ARCHITECT, OR LAND SURVEYOR SHALL STAMP THE DOCUMENT AND INCLUDE THE NOTATION "ALTERED BY" FOLLOWED BY THEIR SIGNATURE, THE DATE OF SUCH ALTERATION, AND A SPECIFIC DESCRIPTION OF THE ALTERATION.



HERKIMER COUNTY
 HIGHWAY DEPARTMENT

FILE NAME = B:\GLOBAL\Projects\Herkimer County\2251183 - Replace Bleeker St CR 241 Culvert\06_Drawings\Transpa\2251183_cph_typ.dgn
 DATE = 4/15/2026
 TIME = 2:38:17 PM

PROJECT MANAGER W. FRYE
 CHECK W. FRYE
 DRAFTING V. GREGG
 CHECK W. FRYE
 DESIGN R. MIER
 JOB MANAGER W. FRYE
 DESIGN SUPERVISOR W. FRYE



TYPICAL CULVERT SECTION
 SCALE: 1" = 10'-0"

NOTES:
 1. (*) INDICATES ROADWAY DIMENSIONS NORMAL TO THE CENTERLINE.

AFFIX SEAL: ON:	ALTERED BY: ON:

AS-BUILT REVISIONS DESCRIPTION OF ALTERATIONS:	CULVERT REPLACEMENT	PIN 2755.11	BRIDGES	CULVERTS C241-00.91	ALL DIMENSIONS IN ft UNLESS OTHERWISE NOTED	PROJECT NUMBER 2251183	
	BLEECKER ST (CR 241)					TYPICAL CULVERT SECTION	DRAWING NO. TYP-02
	OVER TRIBUTARY TO MOHAWK RIVER						SHEET NO. 4
	TOWN OF FRANKFORT						
COUNTY: HERKIMER	REGION: 2				HERKIMER COUNTY HIGHWAY DEPARTMENT		

IT IS A VIOLATION OF LAW FOR ANY PERSON, UNLESS THEY ARE ACTING UNDER THE DIRECTION OF A LICENSED PROFESSIONAL ENGINEER, ARCHITECT, LANDSCAPE ARCHITECT, OR LAND SURVEYOR, TO ALTER AN ITEM IN ANY WAY. IF AN ITEM BEARING THE STAMP OF A LICENSED PROFESSIONAL IS ALTERED, THE ALTERING ENGINEER, ARCHITECT, LANDSCAPE ARCHITECT, OR LAND SURVEYOR SHALL STAMP THE DOCUMENT AND INCLUDE THE NOTATION "ALTERED BY" FOLLOWED BY THEIR SIGNATURE, THE DATE OF SUCH ALTERATION, AND A SPECIFIC DESCRIPTION OF THE ALTERATION.

LaBella
 Powered by partnership.